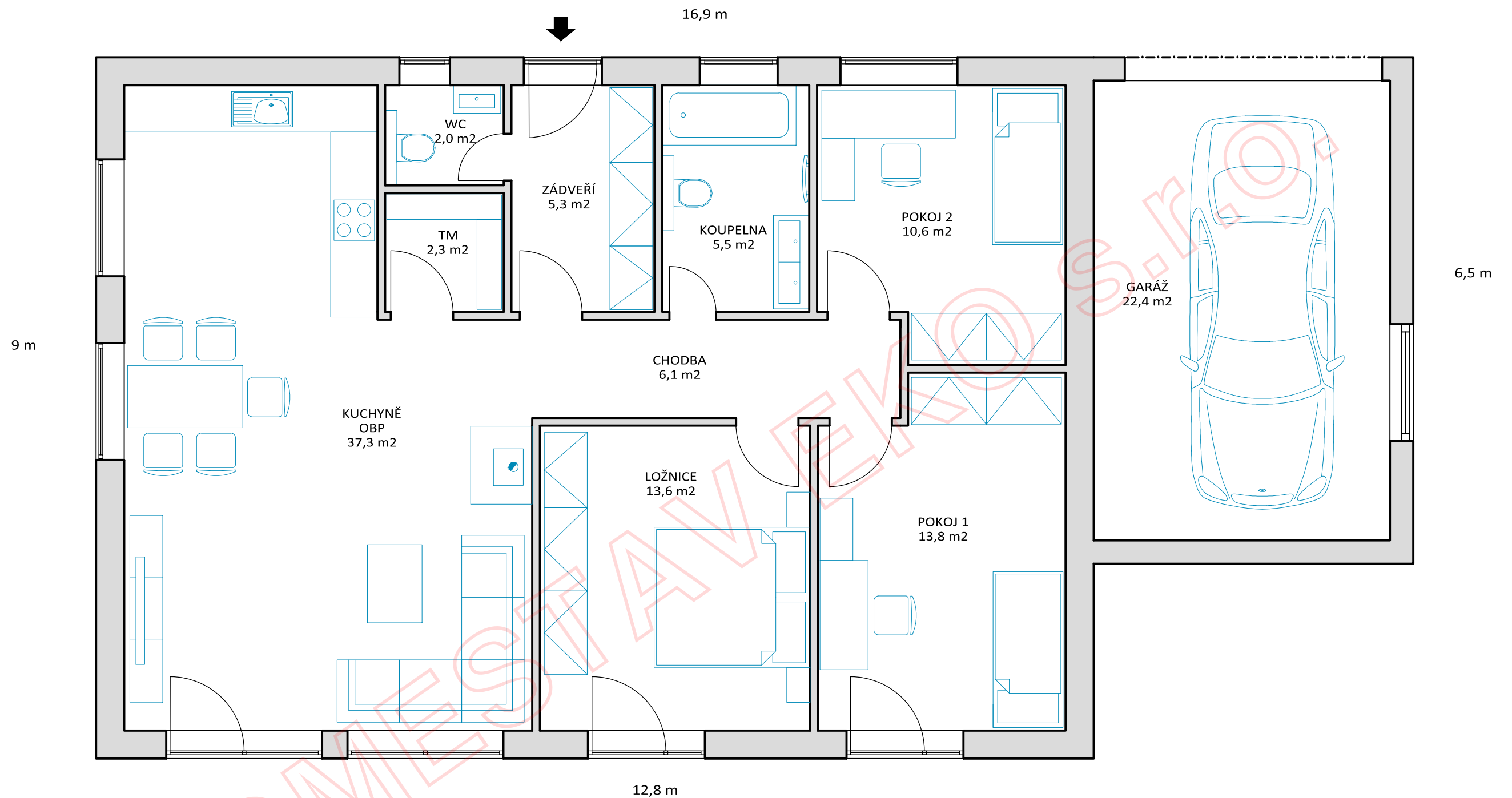


## PANELOVÉ DŘEVOSTAVBY



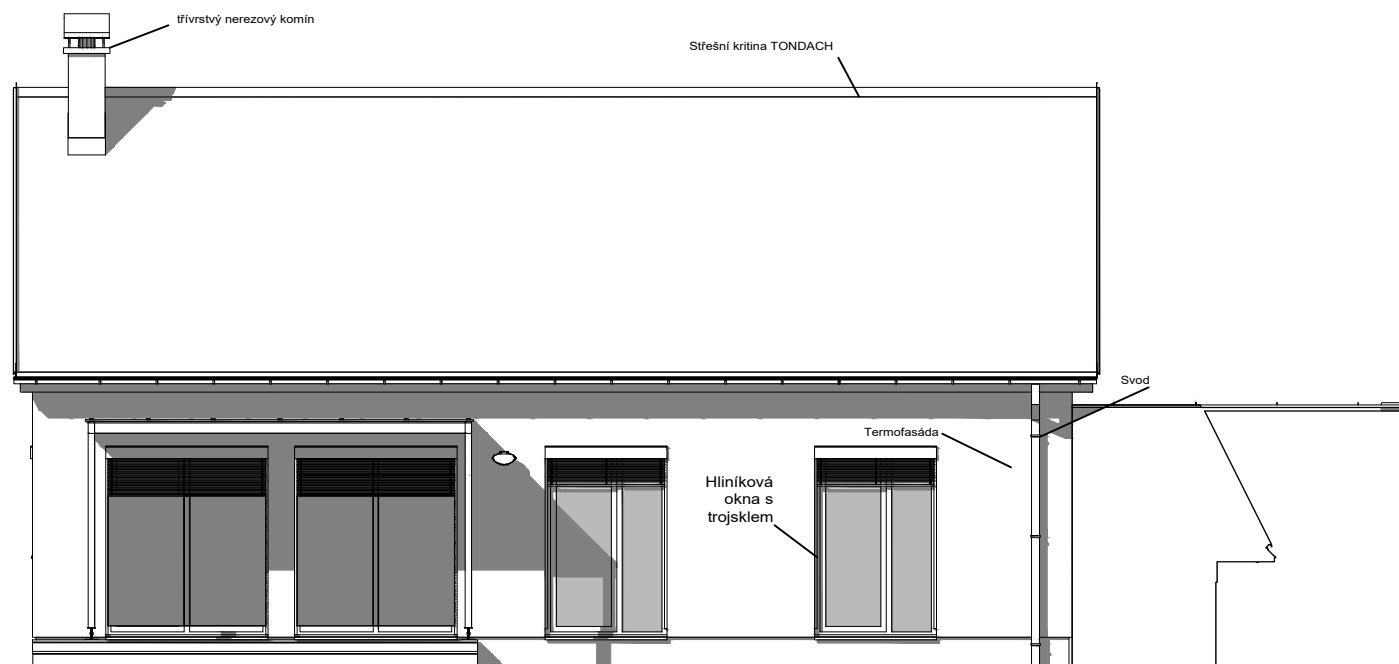
# ECONOMY

*Architektonická studie*

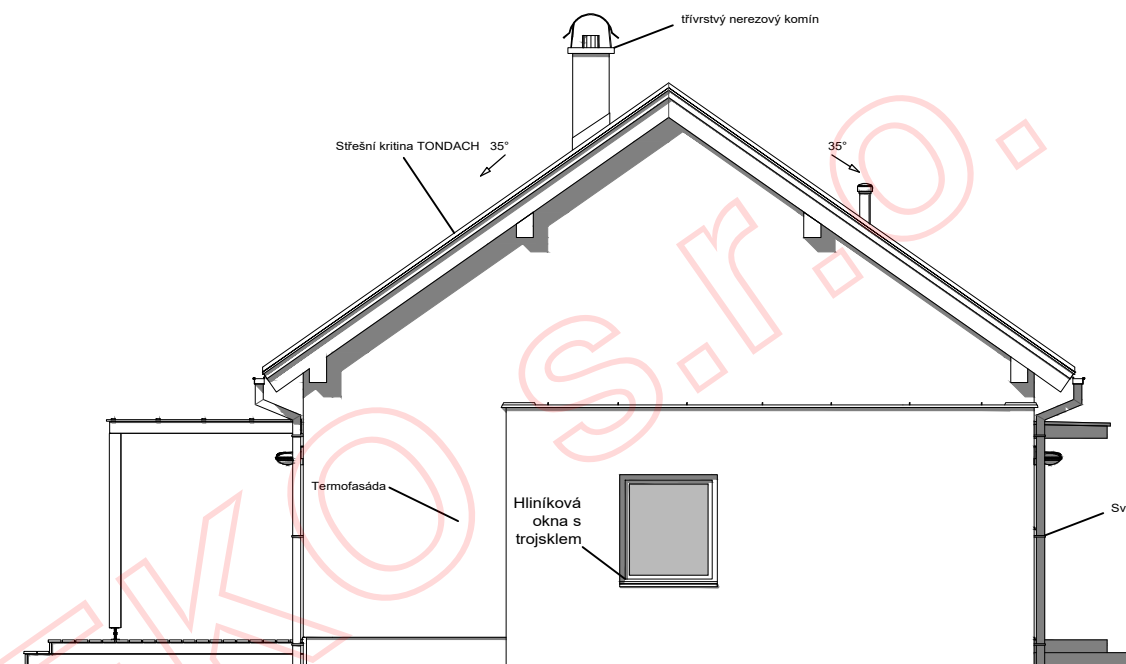


UŽITNÁ PLOCHA 1.NP	96,5 m <sup>2</sup>
GARÁŽ	22,4 m <sup>2</sup>
CELKOVÁ UŽITNÁ PLOCHA	118,9 m <sup>2</sup>
ZASTAVĚNÁ PLOCHA	141,9 m <sup>2</sup>

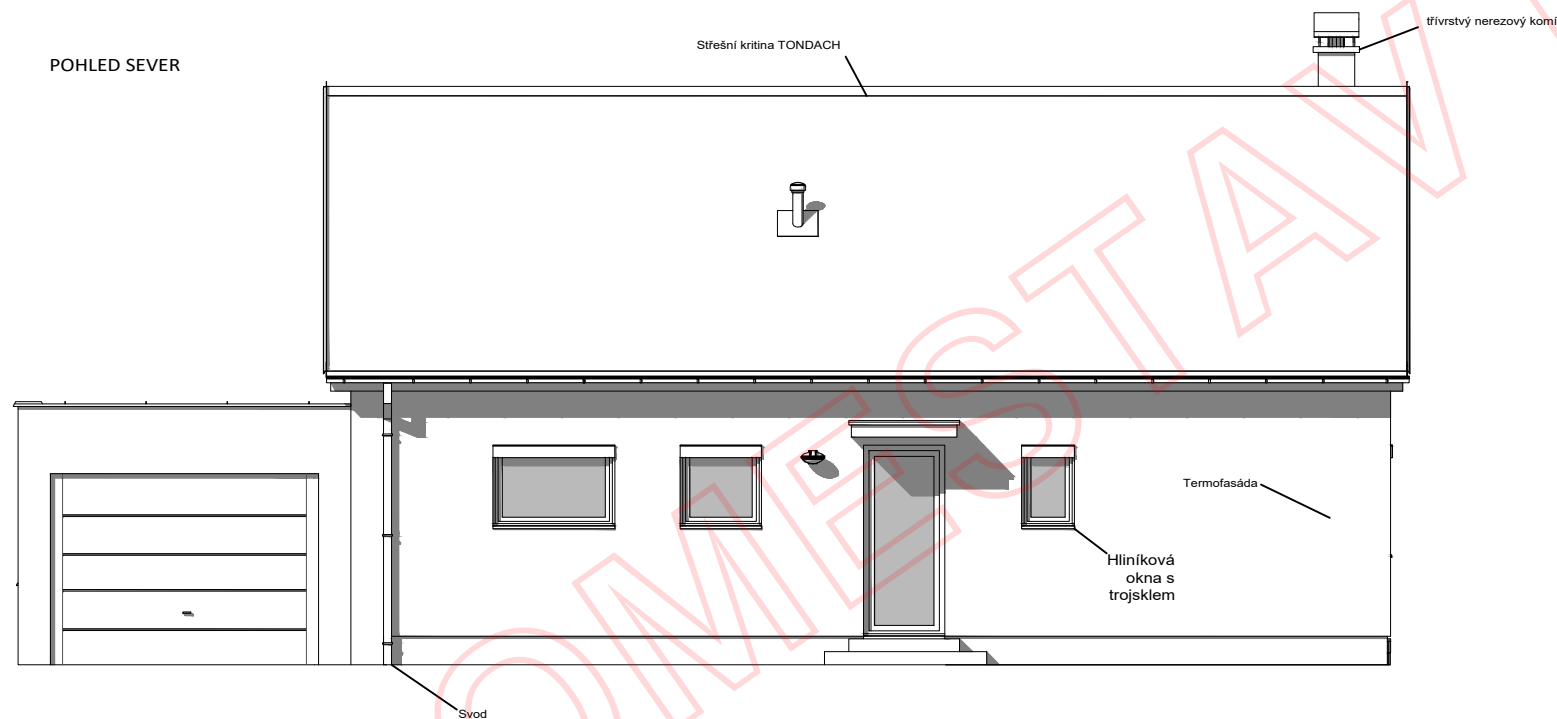
POHLED JIH



POHLED VÝCHOD



POHLED SEVER



POHLED ZÁPAD

